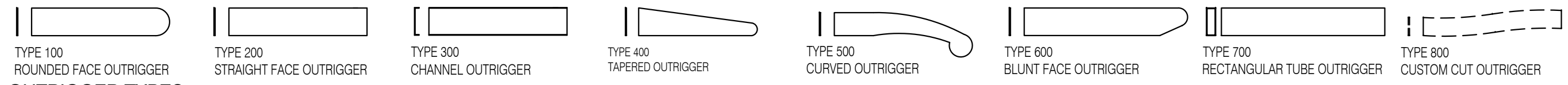


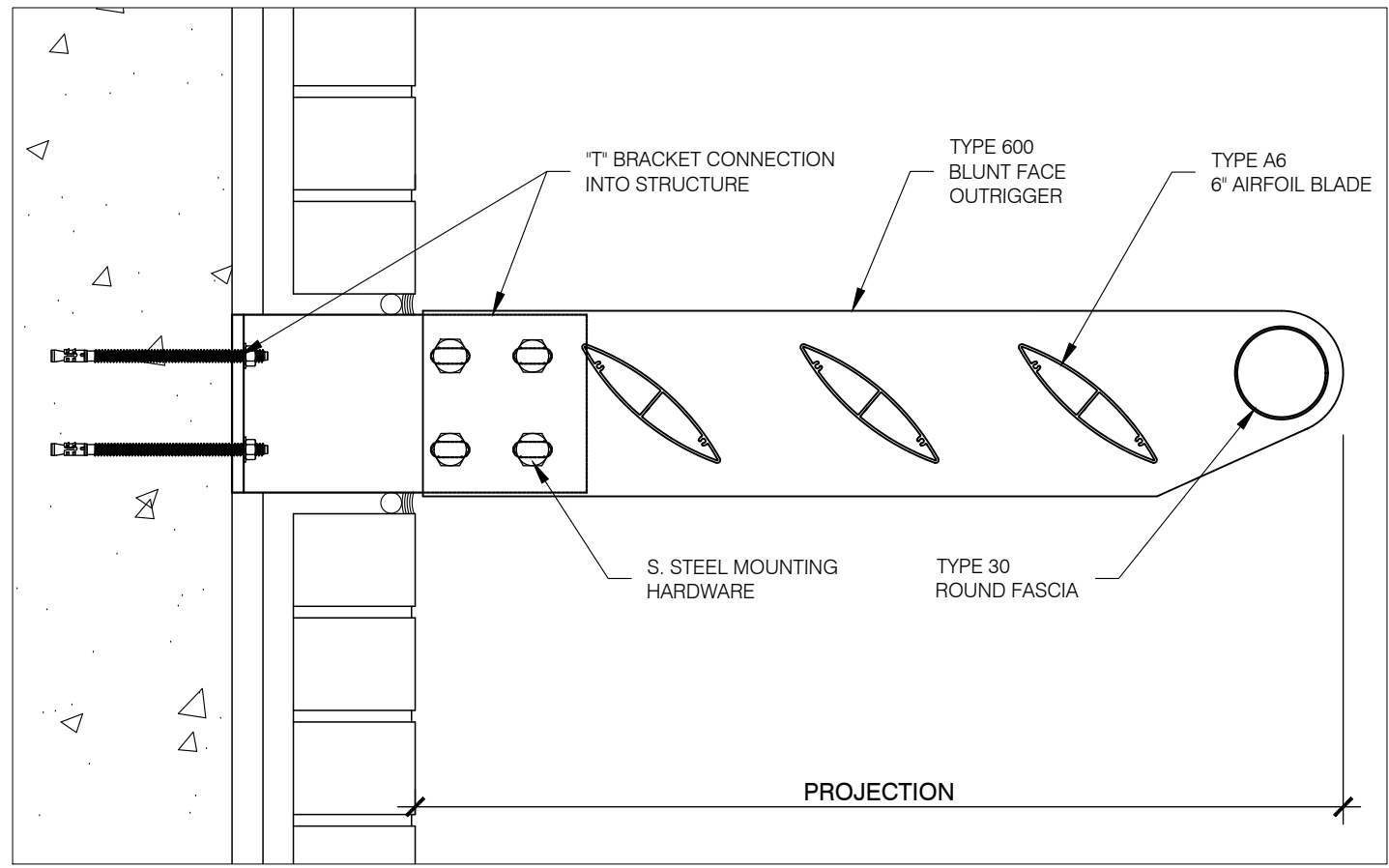
**BLADES TYPES**



**OUTRIGGER TYPES**

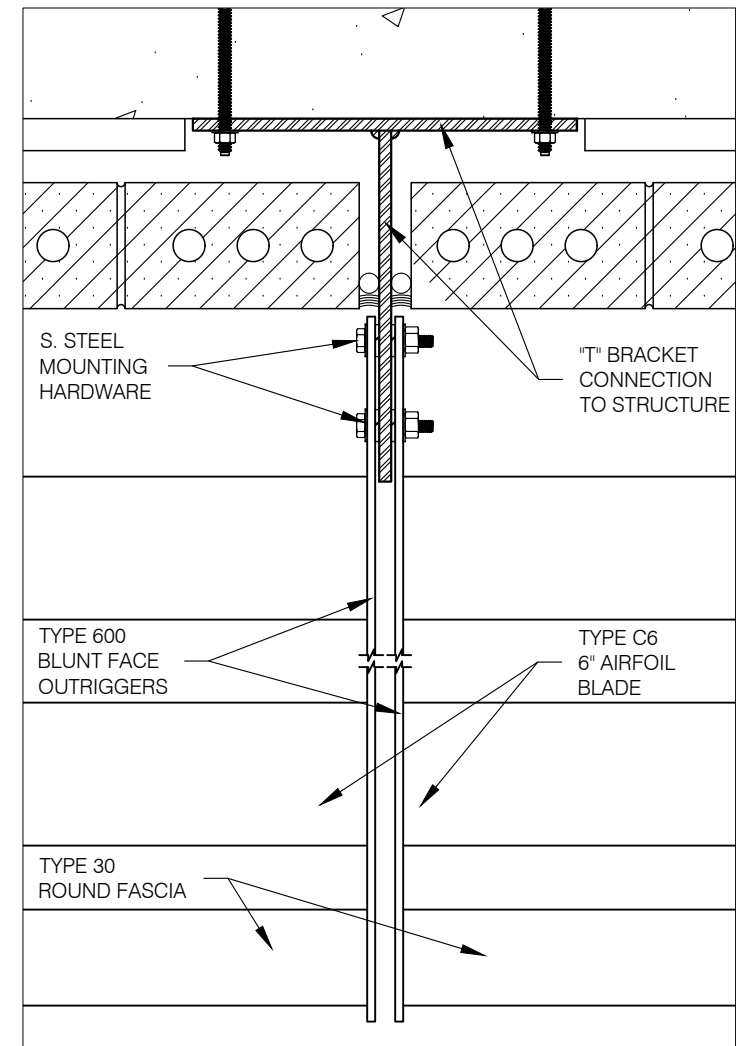
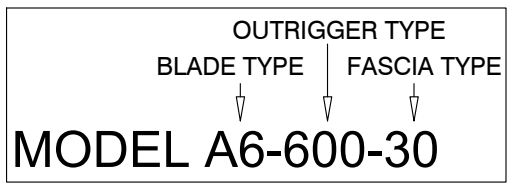


**FASCIA TYPES**

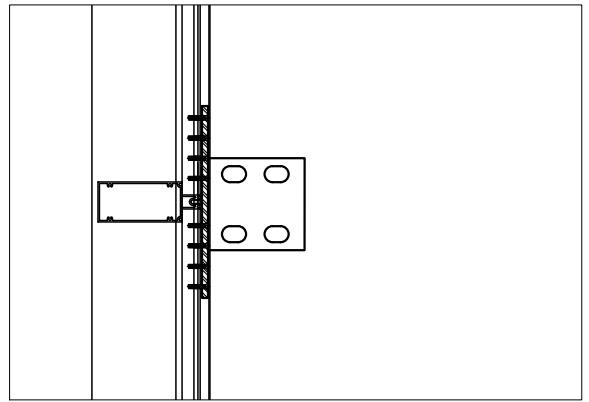


**MODEL A6-600-30 CROSS SECTION**

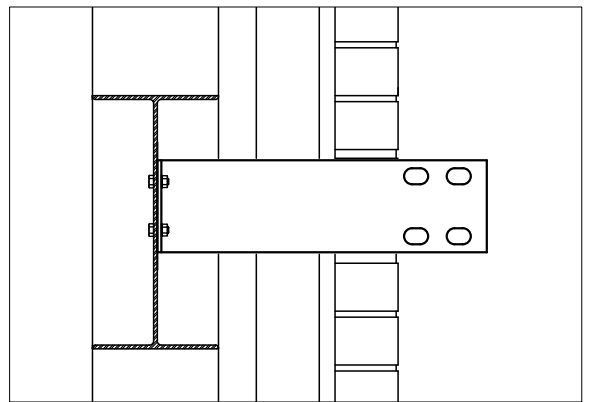
**NOTE:**  
THE CONNECTION DETAILS HEREIN ARE EXAMPLES.  
ALL CONNECTIONS ARE DESIGNED AND ENGINEERED  
TO PROJECT CONDITIONS



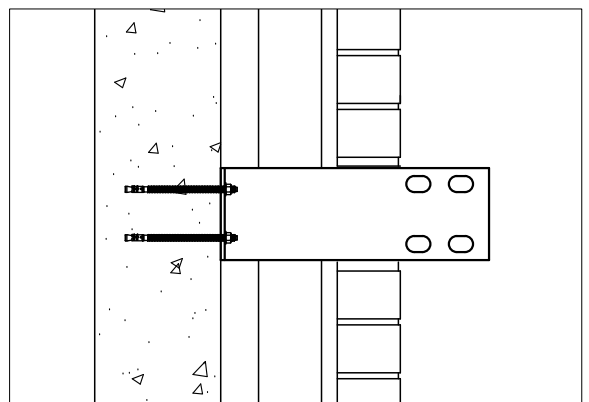
**PLAN AT "T" BRACKET CONNECTION**



**CONNECTION INTO CURTAIN WALL**



**CONNECTION INTO STEEL**



**CONNECTION INTO CONCRETE**

**SUNSHADE MODEL A6-600-30**

EXTRUDED ALUMINUM  
6" AIRFOIL BLADES, FLAT  
ALUMINUM BLUNT FACE  
OUTRIGGERS AND 4" Ø ROUND  
FASCIA.

SUNSHADES SECTIONS TO BE  
ANCHORED INTO STRUCTURE  
WITH ALUMINUM "T"  
MOUNTING BRACKETS.  
ANCHORING HARDWARE  
SHALL BE S. STEEL.

ALL COMPONENTS TO BE  
PAINTED OR ANODIZED FINISH  
TO CONSULTANT'S  
SPECIFICATIONS.

**general notes**

no.	description	date

revisions:

**TENPLUS**  
ARCHITECTURAL PRODUCTS LTD.  
5 - 2333 MILLRACE COURT  
MISSISSAUGA, ON L5N 1W2  
TEL: 905-363-2306  
FAX: 905-363-2309  
www.tenplus-online.com

project:

spec section:

customer:

architect:

ten plus representative:

**drawing: SUNSHADE MODEL A6-600-30**

scale:

date:

drawn by: TEN PLUS

checked by:

sheet no. project no.

**TP1**