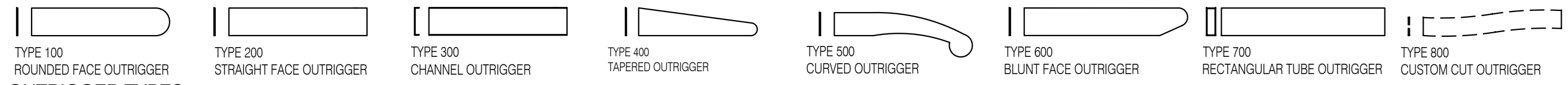




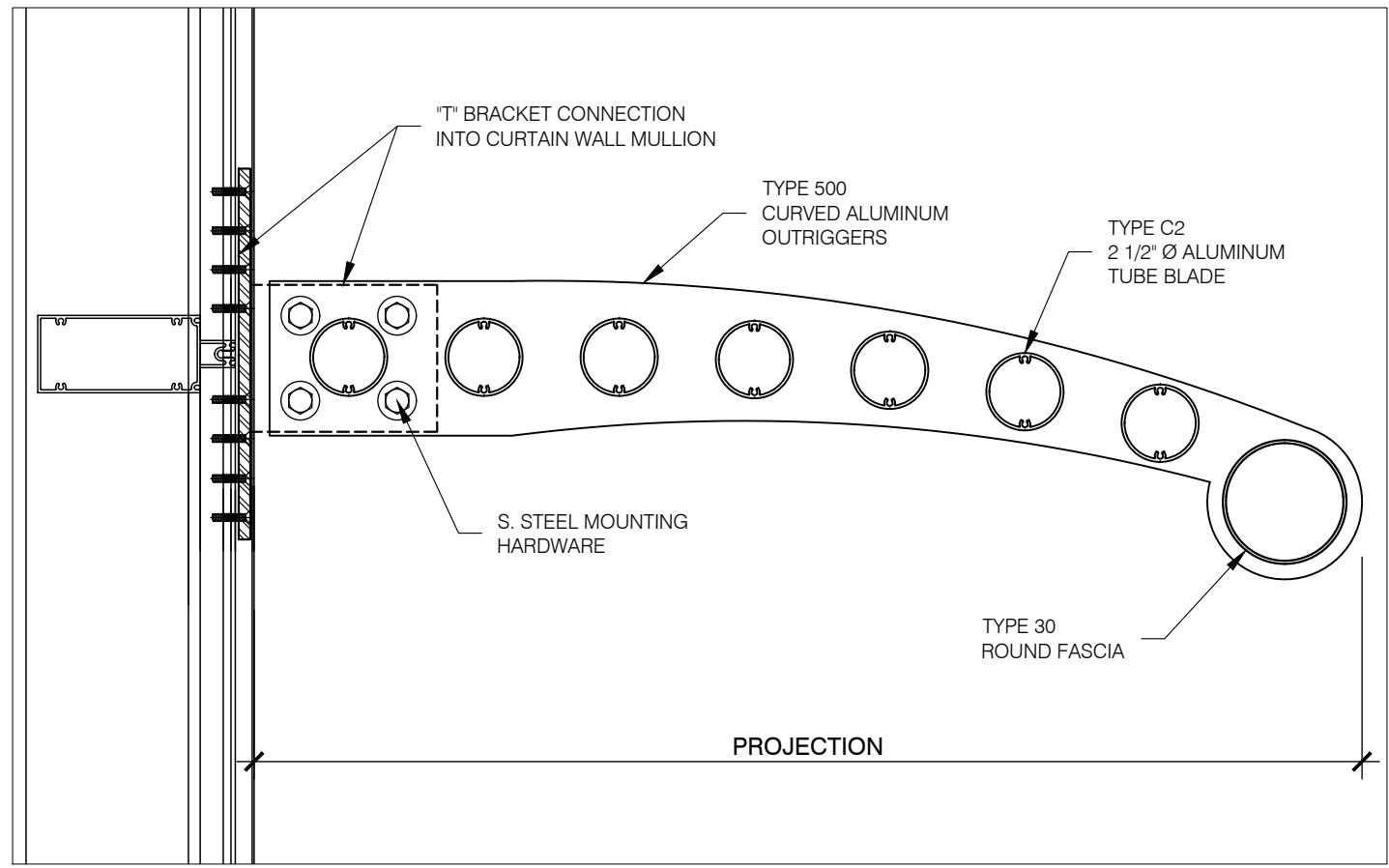
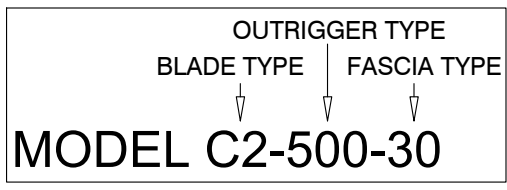
**BLADES TYPES**



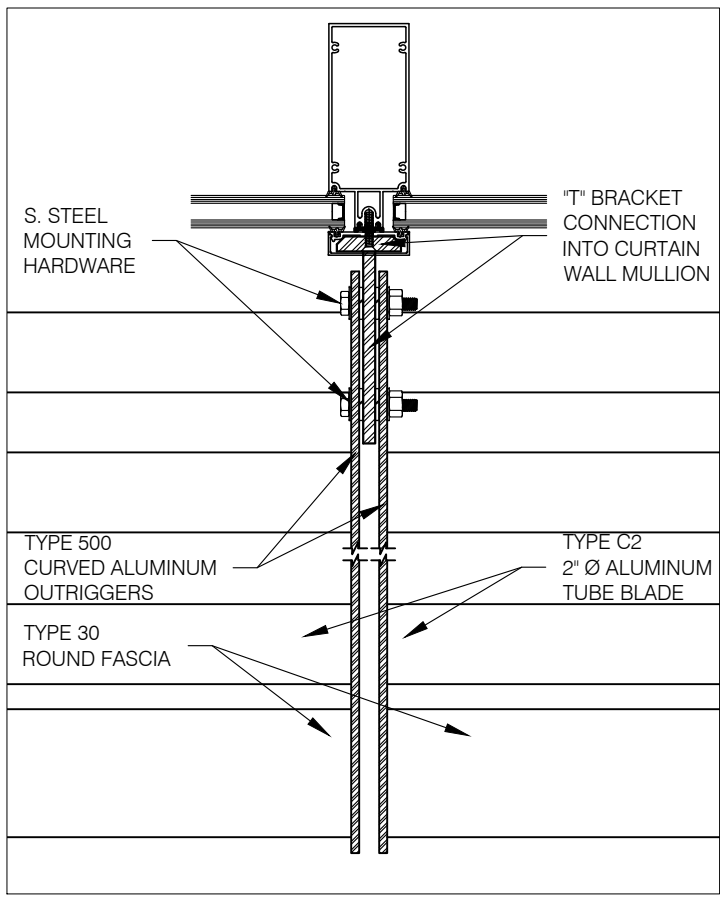
**OUTRIGGER TYPES**



**FASCIA TYPES**

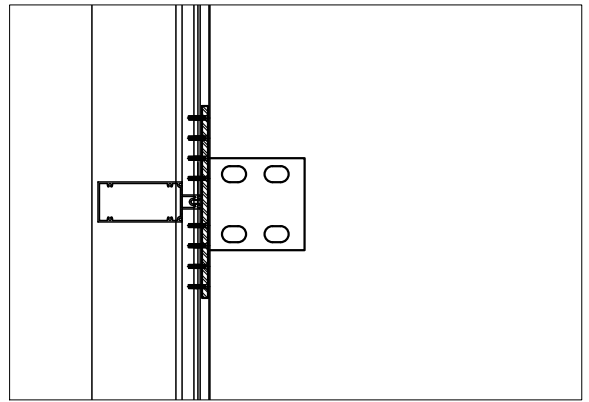


**MODEL C2-500-30 CROSS SECTION**

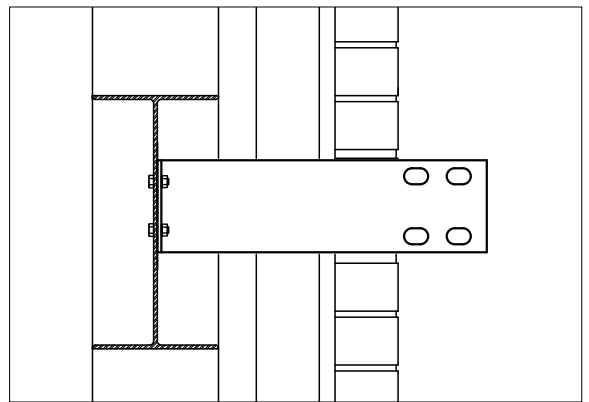


**PLAN AT "T" BRACKET CONNECTION**

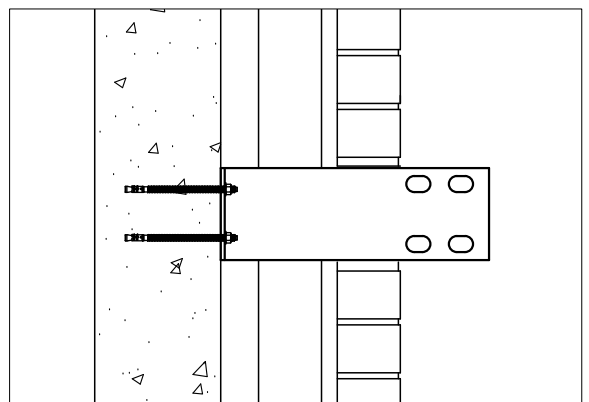
**NOTE:**  
THE CONNECTION DETAILS HEREIN ARE EXAMPLES.  
ALL CONNECTIONS ARE DESIGNED AND ENGINEERED  
TO PROJECT CONDITIONS



**CONNECTION INTO CURTAIN WALL**



**CONNECTION INTO STEEL**



**CONNECTION INTO CONCRETE**

**SUNSHADE MODEL C2-500-30**

EXTRUDED ALUMINUM  
2" DIAMETER TUBE BLADES,  
FLAT ALUMINUM CURVED  
OUTRIGGERS AND 4"  
DIAMETER ROUND FASCIA.

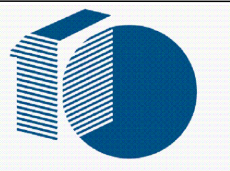
SUNSHADES SECTIONS TO BE  
ANCHORED INTO STRUCTURE  
WITH ALUMINUM "T"  
MOUNTING BRACKETS.  
ANCHORING HARDWARE  
SHALL BE S. STEEL.

ALL COMPONENTS TO BE  
PAINTED OR ANODIZED FINISH  
TO CONSULTANT'S  
SPECIFICATIONS.

**general notes**

no.	description	date

revisions:



**TENPLUS**  
ARCHITECTURAL PRODUCTS LTD.  
5 - 2333 MILLRACE COURT  
MISSISSAUGA, ON L5N 1W2  
TEL: 905-363-2306  
FAX: 905-363-2309  
www.tenplus-online.com

project:

spec section:

customer:

architect:

ten plus representative:

**drawing: SUNSHADE MODEL C2-500-30**

scale:

date:

drawn by:  
TEN PLUS

checked by:

sheet no. project no.

**TP1**