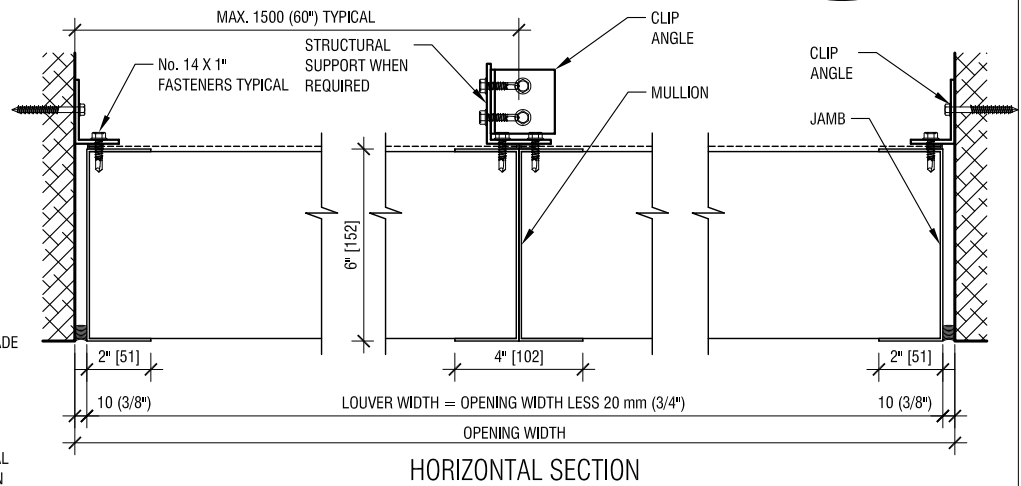
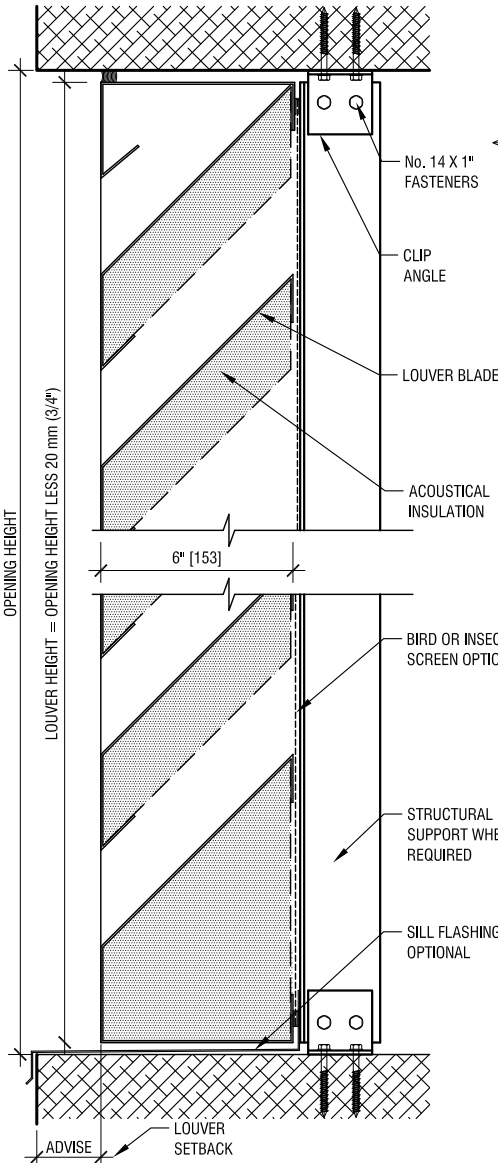


# TEN PLUS ACOUSTICAL LOUVER MODEL A6457

PAGE:      OF     



HORIZONTAL SECTION

### LOUVER SPEC:

TEN PLUS MODEL A6457 - FORMED ALUMINUM LOUVER. ALL TO BE 2 mm (0.080") 6063-T5 ALUMINUM ALLOY. UNLESS OTHERWISE SPECIFIED, ALL STRUCTURAL ELEMENTS TO BE DESIGNED FOR A LIVE LOAD OF 0.95 kPa (20 Lbs. PER SQ FOOT).

### FINISH:

- THREE COAT 70% PVDF RESIN TO AAMA 2605 STD.
- TWO COAT 70% PVDF RESIN TO AAMA 2605 STD.
- ONE COAT THERMOSETTING RESIN TO AAMA 2603 STD.
- COLOR ANODIC
- COLOR: \_\_\_\_\_
- CLEAR ANODIZED     CLASS I     CLASS II
- OTHER: \_\_\_\_\_

### SCREENS:

- 16 mm (5/8") EXPANDED ALUMINUM MESH
- 12 mm (1/2") WELDED & REGALVANIZED STEEL MESH
- 12 mm (1/2") INTER-CRIMPED ALUMINUM WIRE
- 18 X 18 ALUMINUM MESH INSECT SCREEN
- SCREEN TO HAVE PERIMETER FRAME
- OTHER: \_\_\_\_\_

### BLANK OFF PANEL:

- 1 mm (0.040") ALUMINUM SHEET ONLY
- INSULATED / THICKNESS: \_\_\_\_\_
- EXTERIOR SHEET PAINTED TO MATCH LOUVER

### OTHER:

- SILL FLASHING REQUIRED
- LOUVER SETBACK DIM. \_\_\_\_\_
- \_\_\_\_\_
- \_\_\_\_\_

NOTE: SOME OPTIONS MAY LEAD TO EXTRA COSTS TO THE CONTRACT. ENQUIRE WITH YOUR REP.

VERTICAL SECTION

| REF. | QTY. | DESIGN OPENING WIDTH | DESIGN OPENING HEIGHT | NUMBER OF STRUCTURALS (MULLIONS) | LOUVER LOCATION | FIELD OPENING WIDTH | FIELD OPENING HEIGHT | NOTES |
|------|------|----------------------|-----------------------|----------------------------------|-----------------|---------------------|----------------------|-------|
|      |      |                      |                       |                                  |                 |                     |                      |       |
|      |      |                      |                       |                                  |                 |                     |                      |       |
|      |      |                      |                       |                                  |                 |                     |                      |       |
|      |      |                      |                       |                                  |                 |                     |                      |       |
|      |      |                      |                       |                                  |                 |                     |                      |       |
|      |      |                      |                       |                                  |                 |                     |                      |       |
|      |      |                      |                       |                                  |                 |                     |                      |       |
|      |      |                      |                       |                                  |                 |                     |                      |       |
|      |      |                      |                       |                                  |                 |                     |                      |       |
|      |      |                      |                       |                                  |                 |                     |                      |       |

26 - 6535 MILLCREEK DRIVE  
 MISSISSAUGA, ON L5N 2M2  
 TEL: 905-363-2306  
 FAX: 905-363-2309  
 WWW.TENPLUS-ONLINE.COM

|                 |              |
|-----------------|--------------|
| PROJECT:        | DATE:        |
| CUSTOMER:       | DRAWN BY:    |
| CONSULTANT:     | REVISION:    |
| REPRESENTATIVE: | PROJECT No.: |