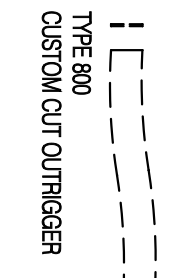
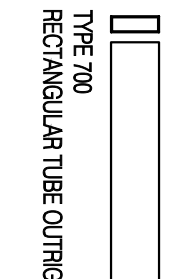
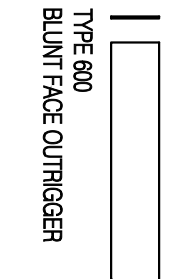
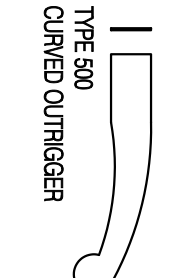
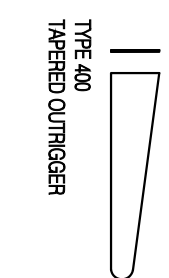
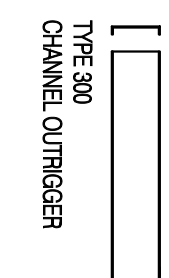
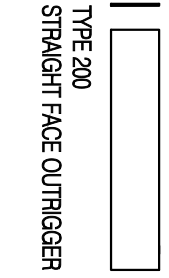
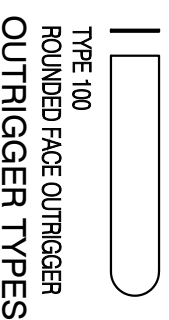
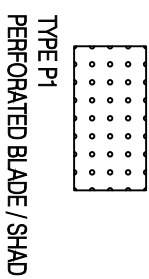
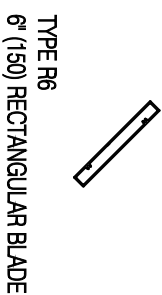
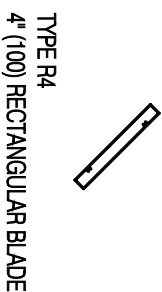
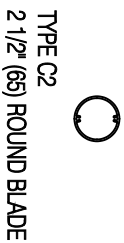
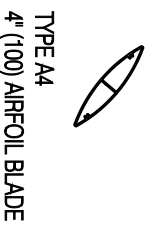
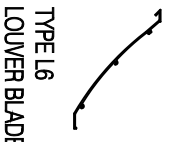
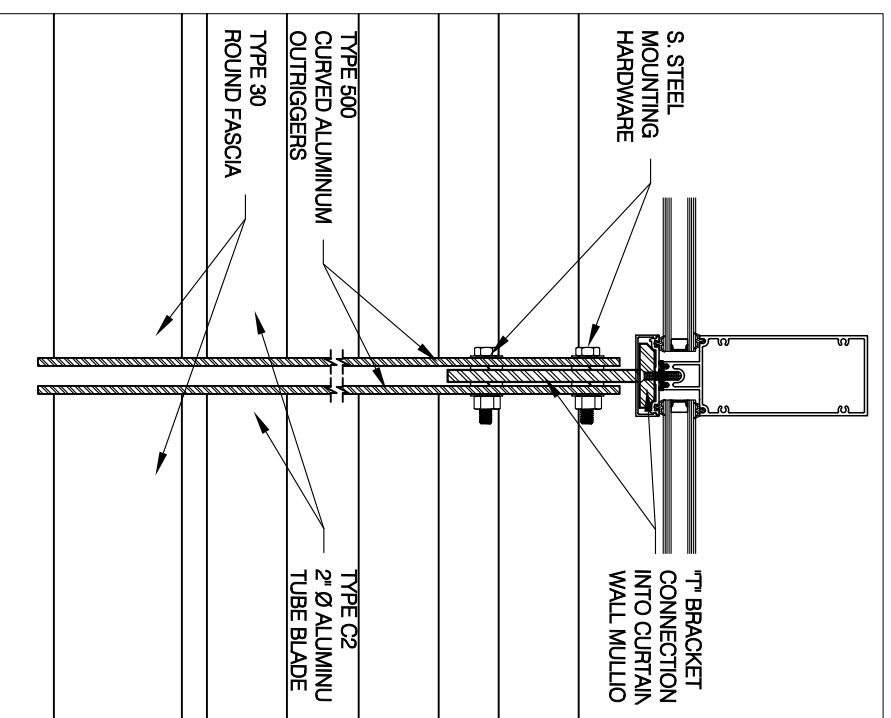
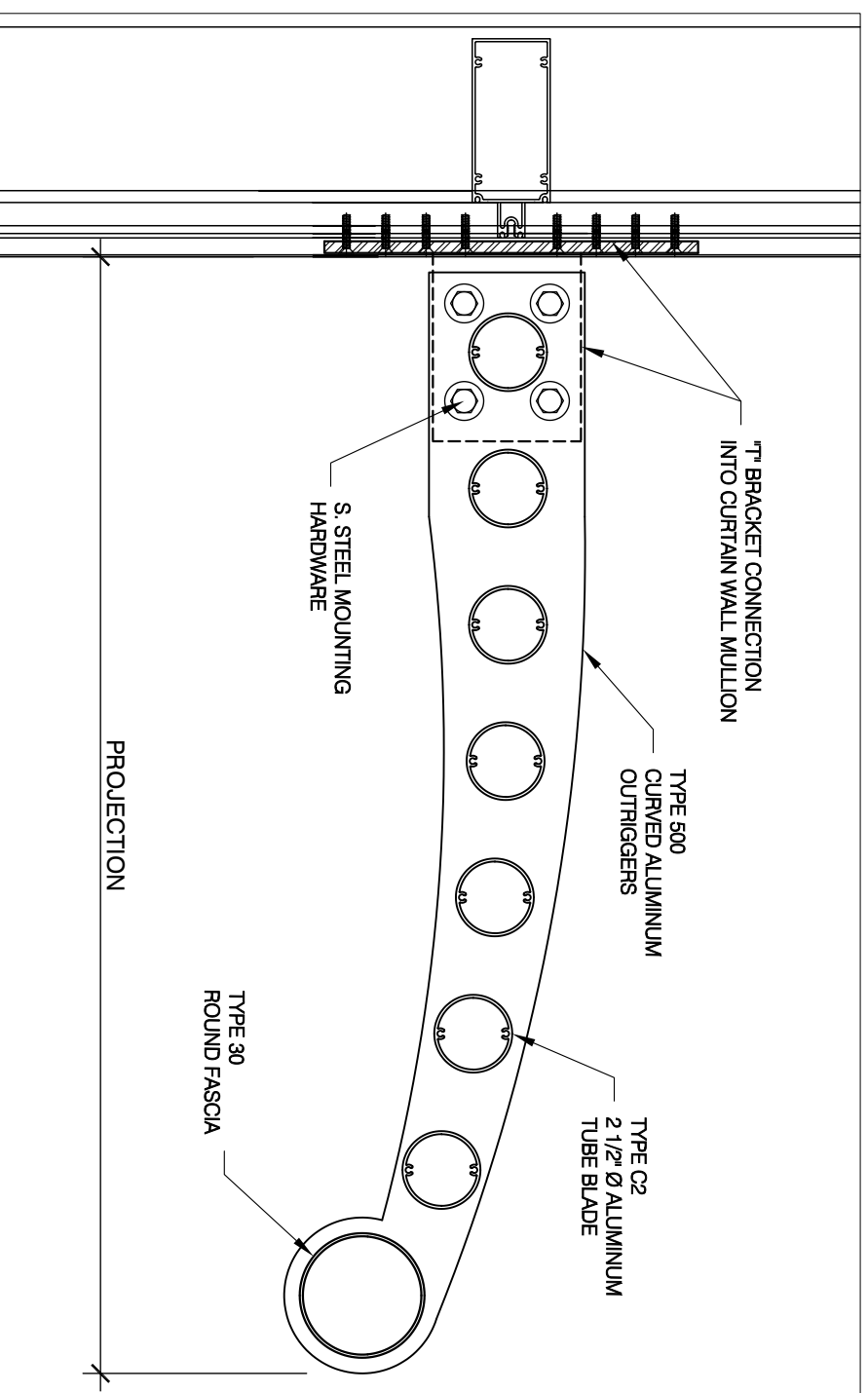


BLADES TYPES

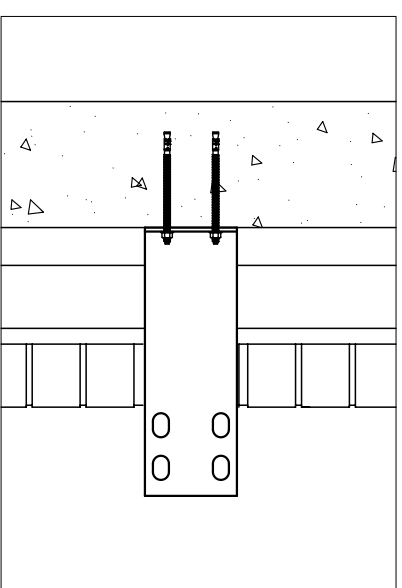
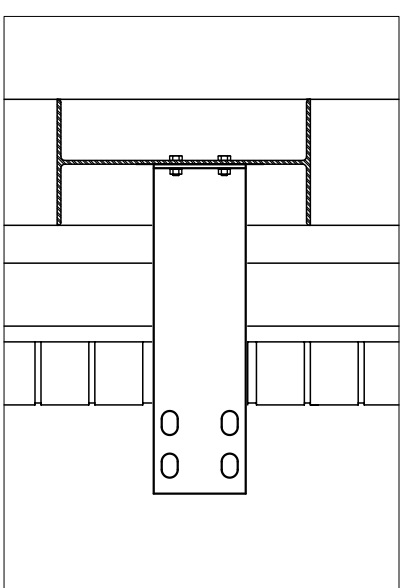
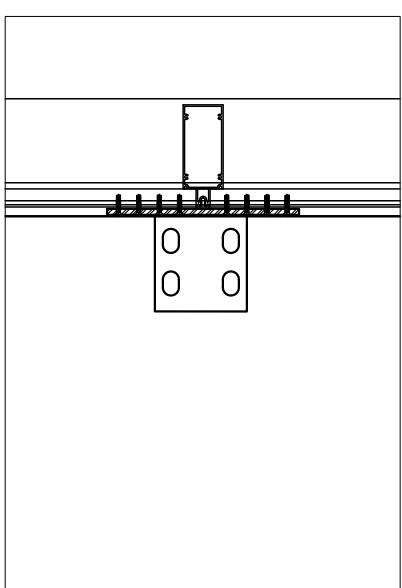


TYPE 10 NO FASCIA
 TYPE 20 CUSTOM FORMED FASCIA
 TYPE 30 ROUND FASCIA
 TYPE 40 RECTANGULAR FASCIA
 TYPE 50 BULLNOSE FASCIA
 TYPE 60 CHANNEL FASCIA

OUTRIGGER TYPE
 BLADE TYPE
 FASCIA TYPE
MODEL C2-500-30



NOTE: THE CONNECTION DETAILS HEREIN ARE EXAMPLES. ALL CONNECTIONS ARE DESIGNED AND ENGINEERED TO PROJECT CONDITIONS



SUNSHADE MODEL C2-500-30

EXTRUDED ALUMINUM
 2" DIAMETER TUBE BLADES,
 FLAT ALUMINUM CURVED
 OUTRIGGERS AND 4"
 DIAMETER ROUND FASCIA,
 PERFORATED BLADE / SHAD

SUNSHADE SECTIONS TO BE
 ANCHORED INTO STRUCTURE
 WITH ALUMINUM T^m
 MOUNTING BRACKETS.
 ANCHORING HARDWARE
 SHALL BE S. STEEL.

ALL COMPONENTS TO BE
 PAINTED OR ANODIZED FINISH
 TO CONSULTANT'S
 SPECIFICATIONS.

general notes

no.	description	date



TENPLUS
 ARCHITECTURAL PRODUCTS LTD
 5 - 2333 MILLRACE COURT
 MISSISSAUGA, ON L5N 2M2
 TEL: 905-363-2306
 FAX: 905-363-2309
 www.tenplus-online.com

project: _____
 spec section: _____
 customer: _____
 architect: _____
 ten plus representative: _____

drawing: **SUNSHADE MODEL**
C2-500-30

scale:	project no.
date:	
drawn by:	
checked by:	
	sheet no.
	TP1