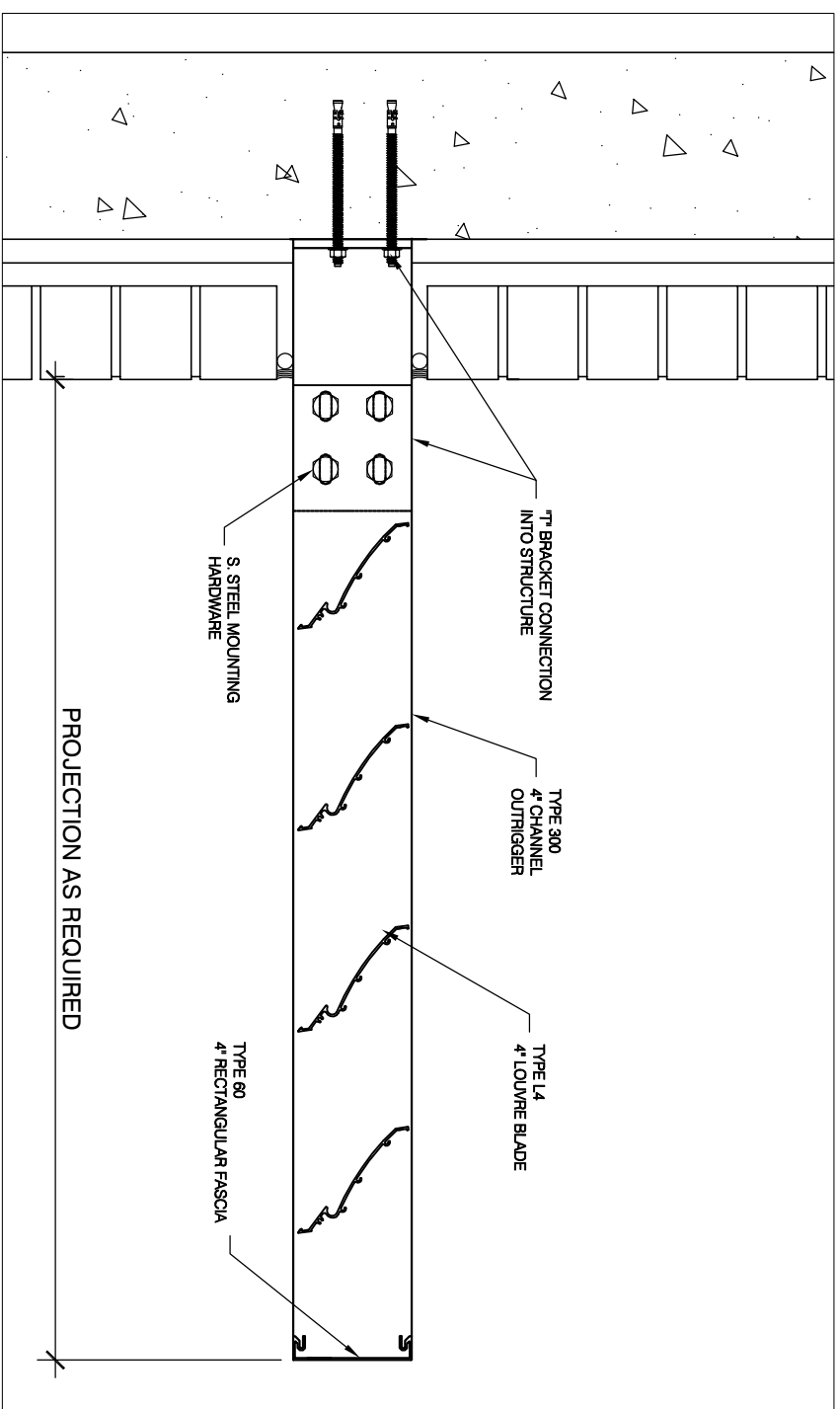


BLADES TYPES

- TYPE L6** LOWER BLADE
TYPE A4 4" (100) AIRFOIL BLADE
TYPE A6 6" (150) AIRFOIL BLADE
TYPE A8 8" (200) AIRFOIL BLADE
TYPE C2 2 1/2" (65) ROUND BLADE
TYPE R4 4" (100) RECTANGULAR BLADE
TYPE R6 6" (150) RECTANGULAR BLAD
TYPE P1 PERFORATED BLADE / SHAI
- TYPE 100** ROUNDED FACE OUTRIGGER
TYPE 200 STRAIGHT FACE OUTRIGGER
TYPE 300 CHANNEL OUTRIGGER
TYPE 400 TAPERED OUTRIGGER
TYPE 500 CURVED OUTRIGGER
TYPE 600 BLUNT FACE OUTRIGGER
TYPE 700 RECTANGULAR TUBE OUTRIGGER
TYPE 800 CUSTOM CUT OUTRIGGER

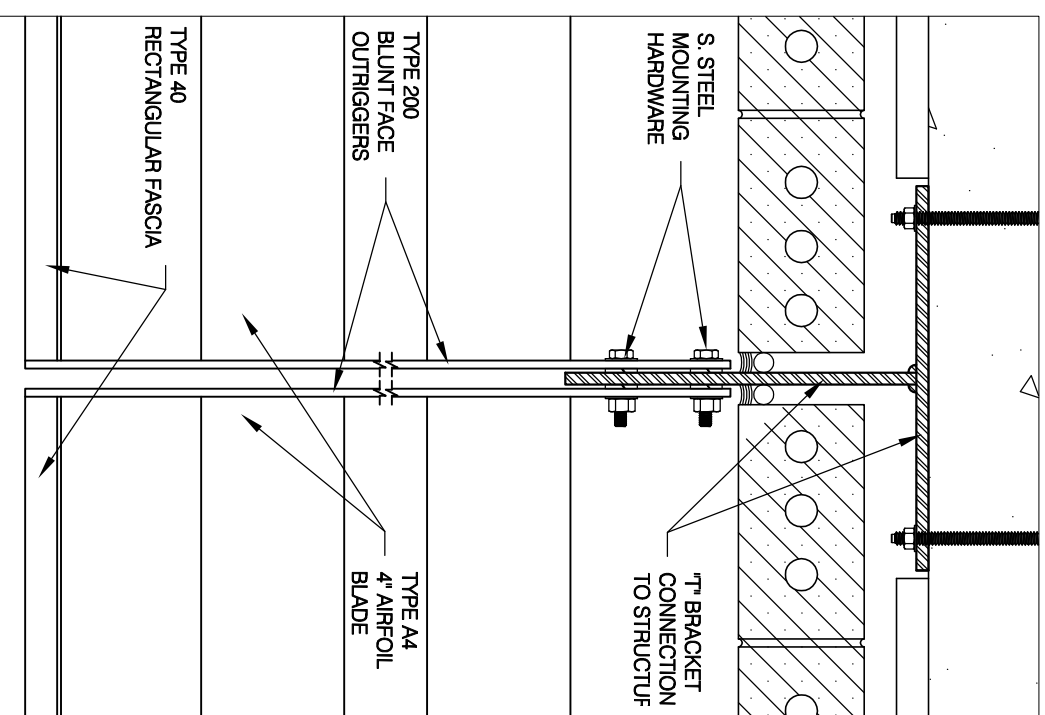
- ## FASCIA TYPES
- TYPE 10** NO FASCIA
TYPE 20 CUSTOM FORMED FASCIA
TYPE 30 ROUND FASCIA
TYPE 40 RECTANGULAR FASCIA
TYPE 50 BILLNOSE FASCIA
TYPE 60 CHANNEL FASCIA

OUTRIGGER TYPE
 BLADE TYPE
 FASCIA TYPE
MODEL A4-200-40

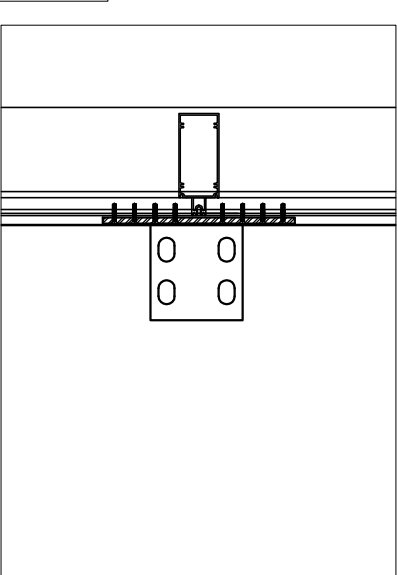


MODEL L4-300-60 CROSS SECTION

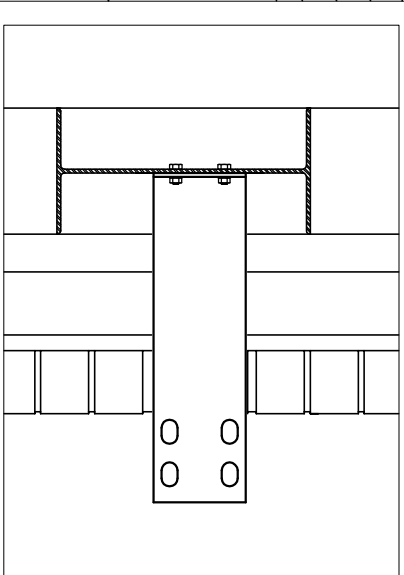
NOTE:
 THE CONNECTION DETAILS HEREIN ARE EXAMPLES.
 ALL CONNECTIONS ARE DESIGNED AND ENGINEERED
 TO PROJECT CONDITIONS



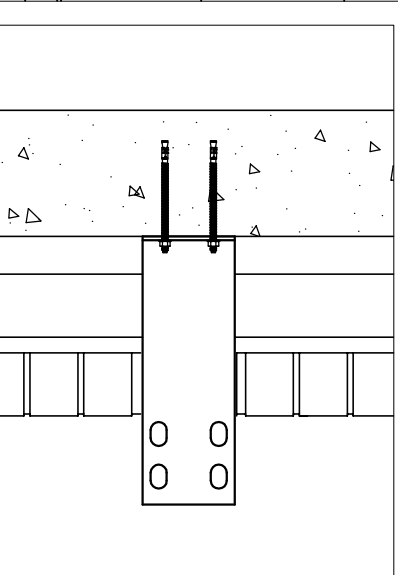
PLAN AT "T" BRACKET CONNECTION



CONNECTION INTO CURTAIN WALL



CONNECTION INTO STEEL



CONNECTION INTO CONCRETE

SUNSHADE MODEL L4-300-60

EXTRUDED ALUMINUM
 4" LOUVRE BLADES, CHANNEL
 OUTRIGGERS AND A CHANNEL
 FASCIA.
 SUNSHADE SECTIONS TO BE
 ANCHORED INTO STRUCTURE
 WITH ALUMINUM "T"
 MOUNTING BRACKETS.
 ANCHORING HARDWARE
 SHALL BE S. STEEL.
 ALL COMPONENTS TO BE
 PAINTED OR ANODIZED FINISH
 TO CONSULTANT'S
 SPECIFICATIONS.

general notes

no.	description	date


TENPLUS
 ARCHITECTURAL PRODUCTS LTD
 26 - 6535 MILLCREEK DRIVE
 MISSISSAUGA, ON L5N 2M2
 TEL: 905-363-2306
 FAX: 905-363-2309
 www.tenplus-online.com

project:

spec section:

customer:

architect:

ten plus representative:

SUNSHADE MODEL L4-300-60

drawing:

scale:

date:

drawn by: TEN PLUS
 checked by:

project no.

sheet no.

TP1