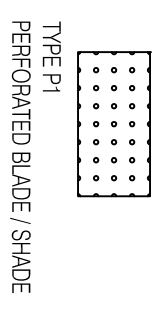
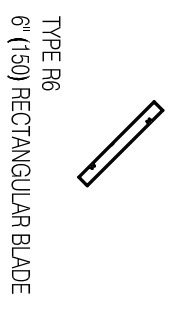
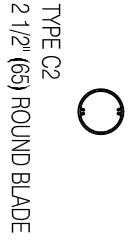
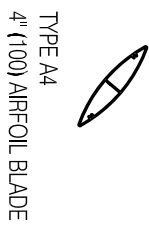
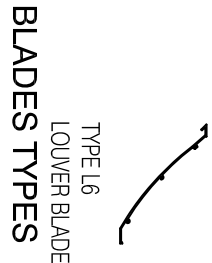


SUNSHADE MODEL
R4-400-30

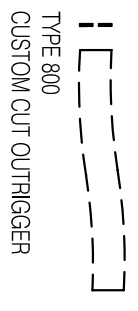
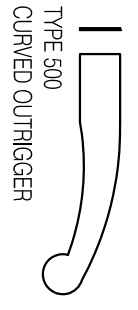
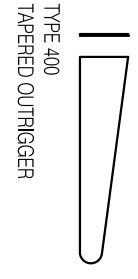
EXTRUDED ALUMINUM
4" RECTANGULAR TUBE
BLADES, FLAT ALUMINUM
TAPERED OUTRIGGERS AND
2" Ø ROUND FASCIA.

SUNSHADE SECTIONS TO BE
ANCHORED INTO STRUCTURE
WITH ALUMINUM™
MOUNTING BRACKETS.
ANCHORING HARDWARE
SHALL BE S. STEEL.

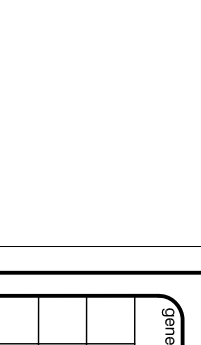
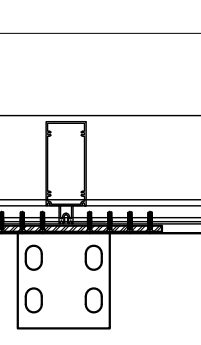
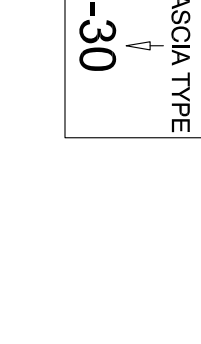
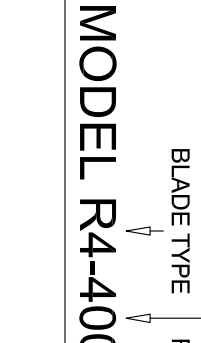
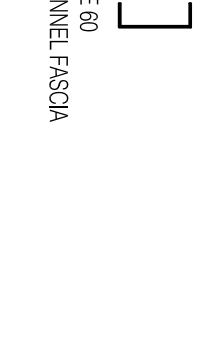
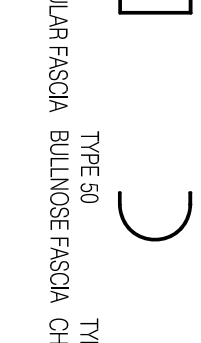
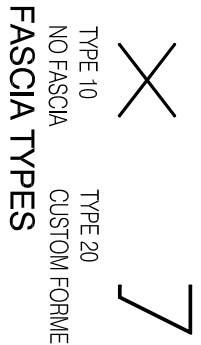
ALL COMPONENTS TO BE
PAINTED OR ANODIZED FINISH
TO CONSULTANT'S
SPECIFICATIONS.



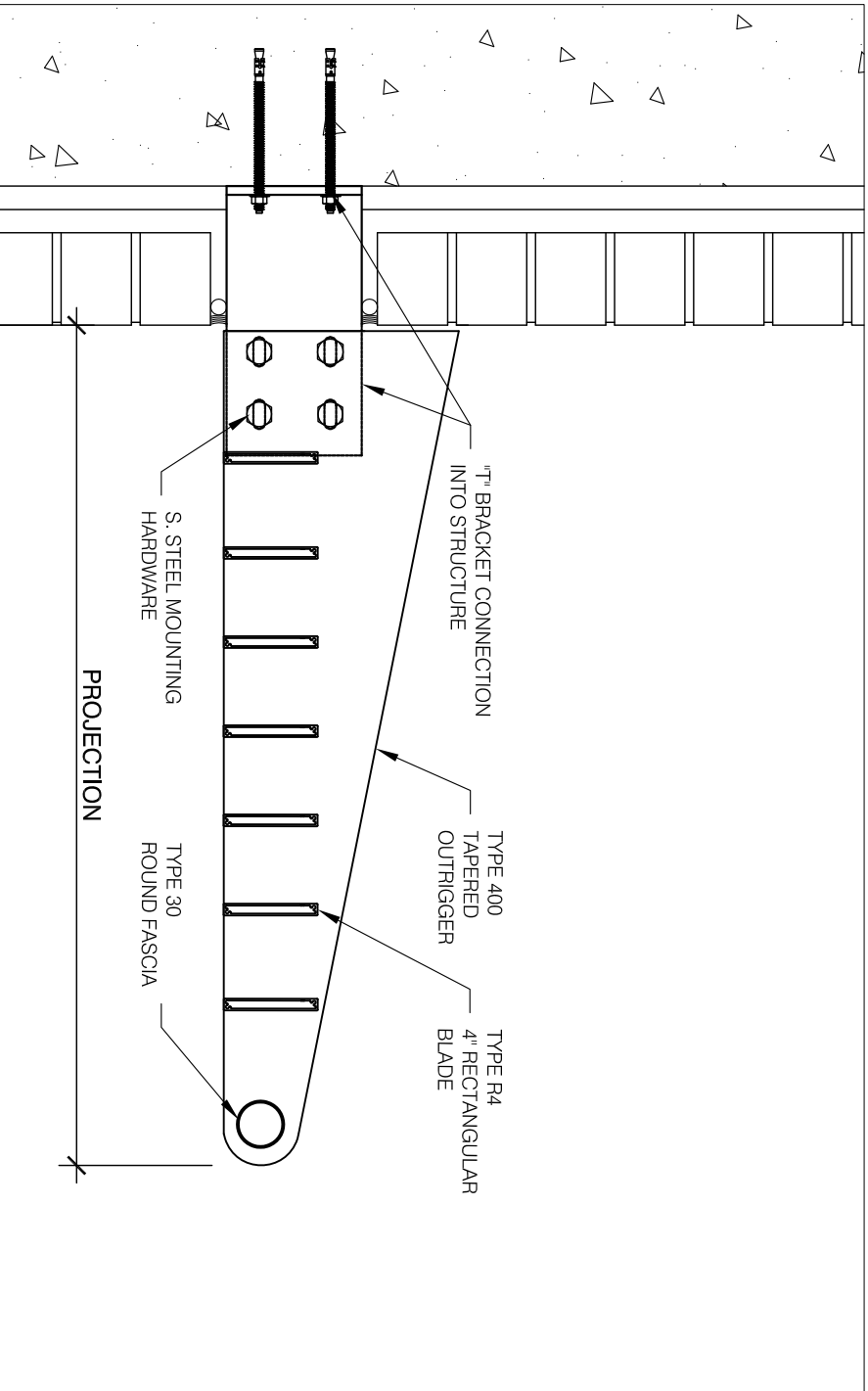
BLADES TYPES



OUTRIGGER TYPES

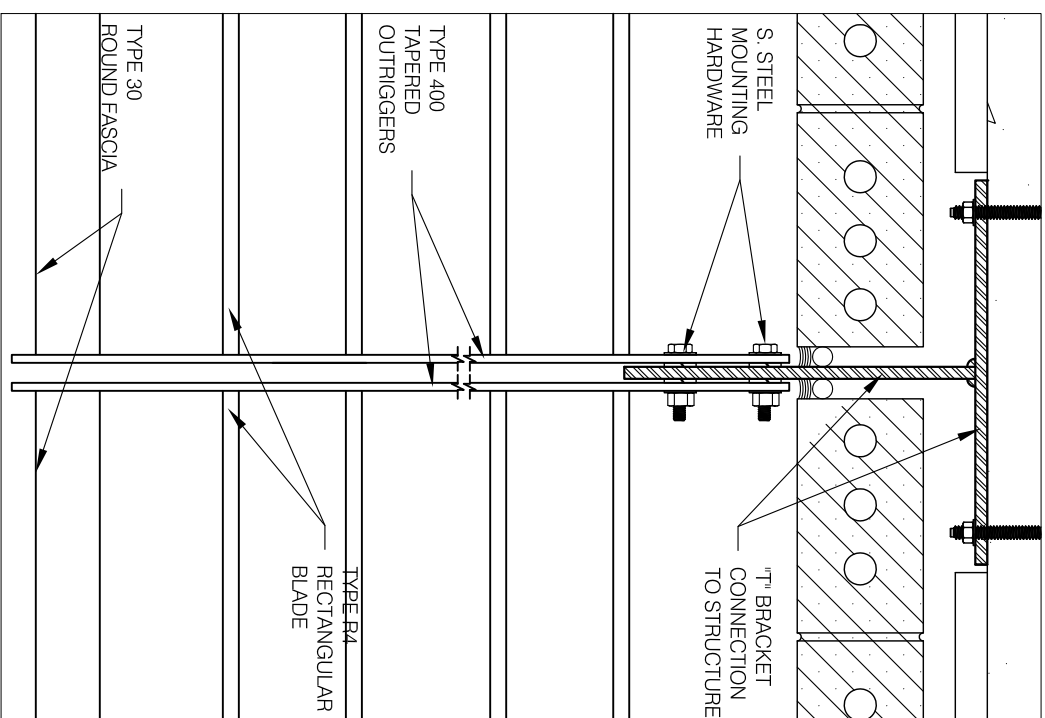
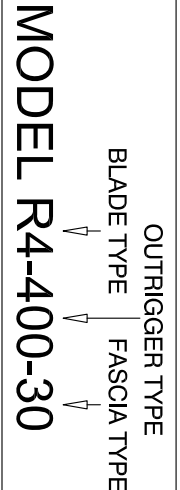


FASCIA TYPES

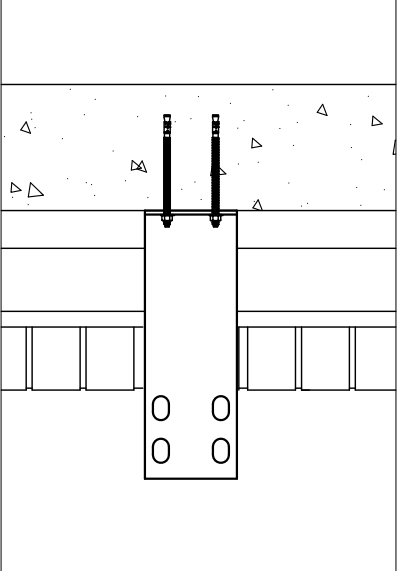
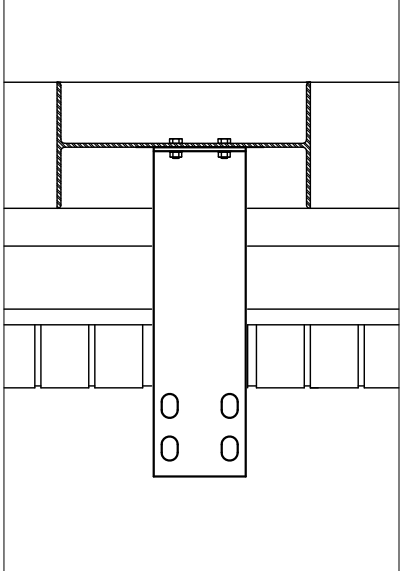
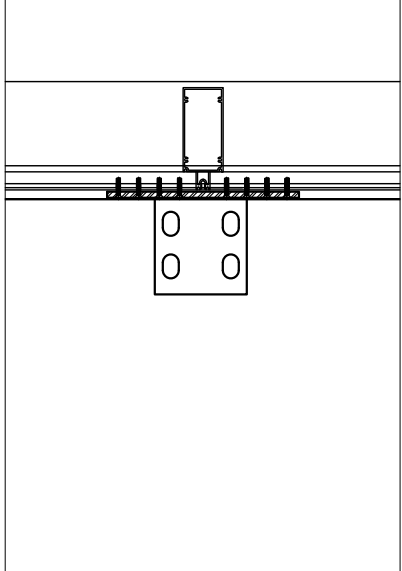


MODEL R4-400-30 CROSS SECTION

NOTE:
THE CONNECTION DETAILS HEREIN ARE EXAMPLES.
ALL CONNECTIONS ARE DESIGNED AND ENGINEERED
TO PROJECT CONDITIONS



PLAN AT "T" BRACKET CONNECTION



general notes	
no.	description
revisions:	date
<p>26 - 6535 MILLCREEK DRIVE MISSISSAUGA, ON L5N 2M2 TEL: 905-363-2306 FAX: 905-363-2309 www.tenplus-online.com</p>	
project:	
spec section:	
customer:	
architect:	
ten plus representative:	
scale:	
date:	
drawn by:	TEN PLUS
checked by:	
sheet no.	project no.
TP1	

drawing:
SUNSHADE MODEL
R4-400-30