

**SUNSHADE MODEL
R6-200-40**

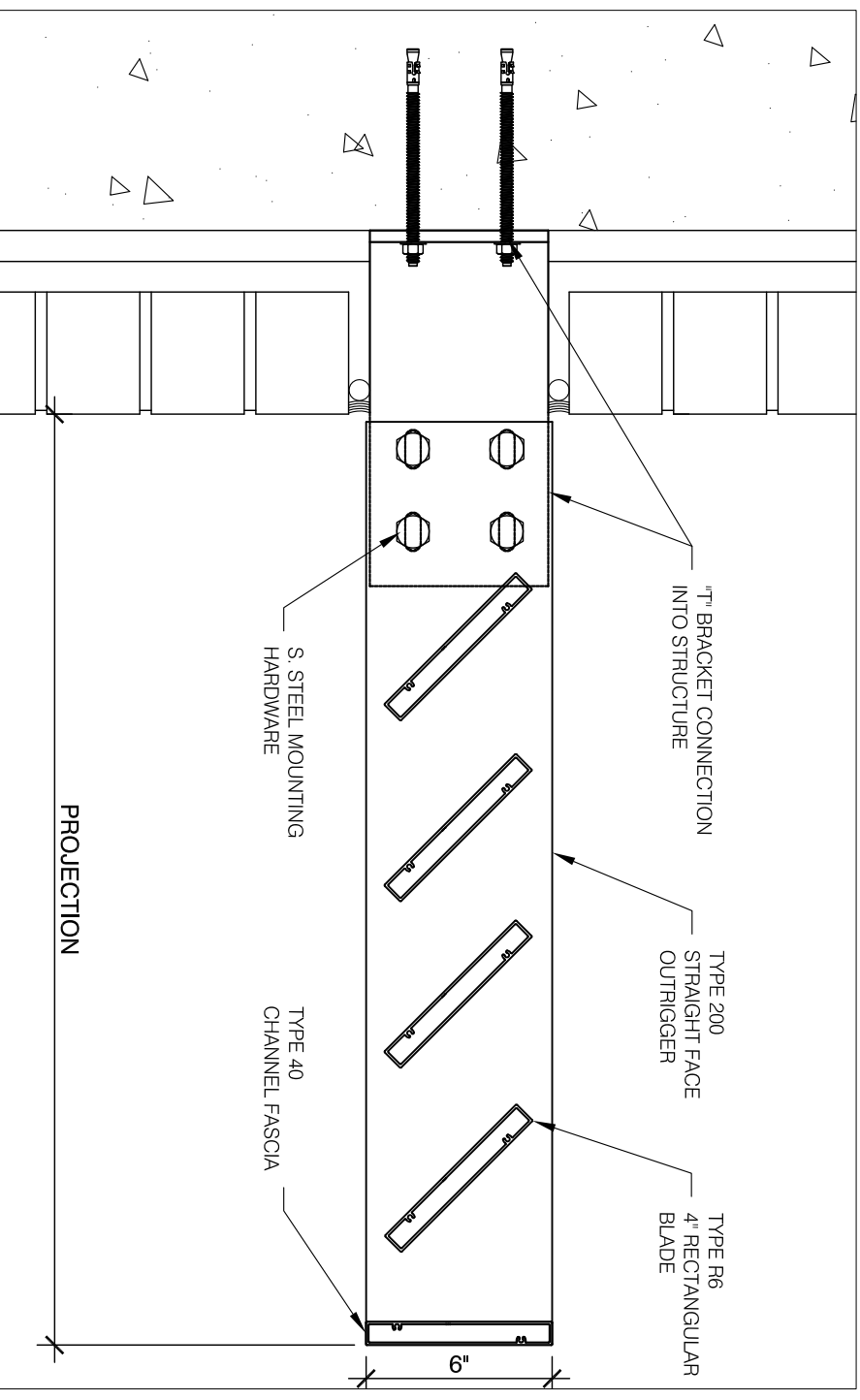
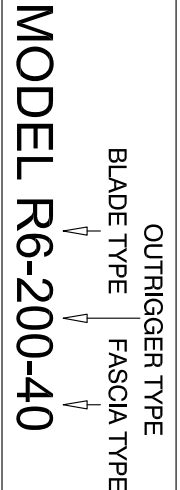
EXTRUDED ALUMINUM
6" RECTANGULAR TUBE
BLADES, FLAT ALUMINUM
STRAIGHT FACE OUTRIGGERS
AND RECTANGULAR FASCIA.
SUNSHADE SECTIONS TO BE
ANCHORED INTO STRUCTURE
WITH ALUMINUM ^T BRACKETS.
MOUNTING BRACKETS,
ANCHORING HARDWARE
SHALL BE S. STEEL.
ALL COMPONENTS TO BE
PAINTED OR ANODIZED FINISH
TO CONSULTANT'S
SPECIFICATIONS.

BLADES TYPES

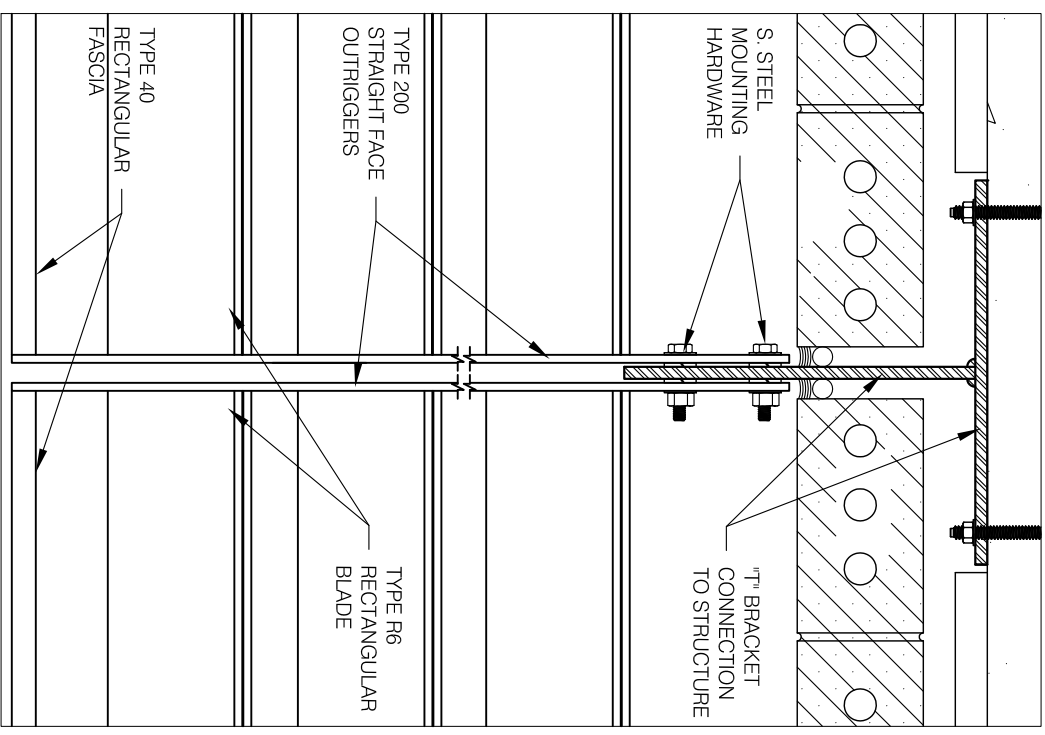
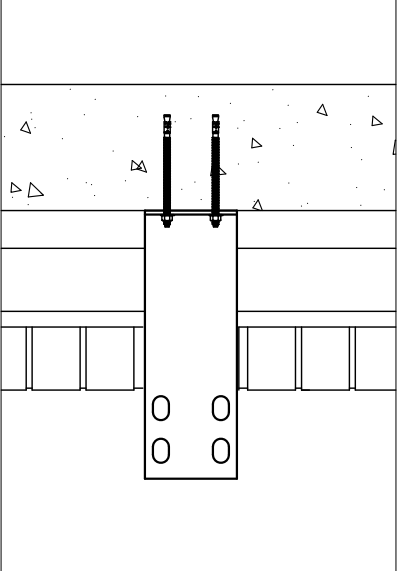
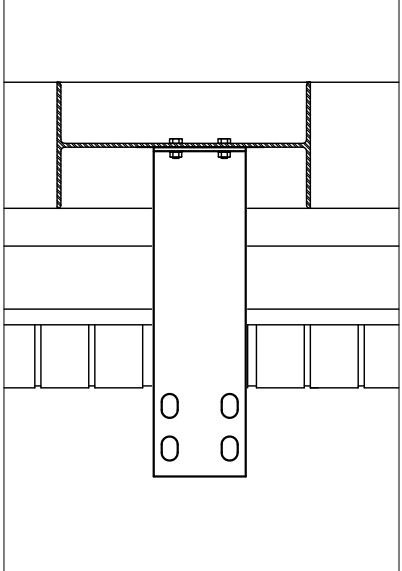
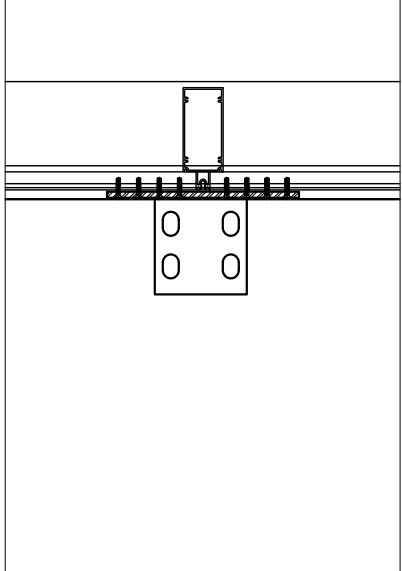
- TYPE L6
LOUVER BLADE
- TYPE A4
4" (100) AIRFOIL BLADE
- TYPE A8
6" (150) AIRFOIL BLADE
- TYPE A8
8" (200) AIRFOIL BLADE
- TYPE C2
2 1/2" (65) ROUND BLADE
- TYPE R4
4" (100) RECTANGULAR BLADE
- TYPE R6
6" (150) RECTANGULAR BLADE
- TYPE P1
PERFORATED BLADE / SHADE

- TYPE 100
ROUNDED FACE OUTRIGGER
- TYPE 200
STRAIGHT FACE OUTRIGGER
- TYPE 300
CHANNEL OUTRIGGER
- TYPE 400
TAPERED OUTRIGGER
- TYPE 500
CURVED OUTRIGGER
- TYPE 600
BLUNT FACE OUTRIGGER
- TYPE 700
RECTANGULAR TUBE OUTRIGGER
- TYPE 800
CUSTOM CUT OUTRIGGER

- TYPE 10
NO FASCIA
- TYPE 20
CUSTOM FORMED FASCIA
- TYPE 30
ROUND FASCIA
- TYPE 40
RECTANGULAR FASCIA
- TYPE 50
BULLNOSE FASCIA
- TYPE 60
CHANNEL FASCIA



NOTE:
THE CONNECTION DETAILS HEREIN ARE EXAMPLES.
ALL CONNECTIONS ARE DESIGNED AND ENGINEERED
TO PROJECT CONDITIONS



general notes	
no.	description
revisions:	date
project:	
spec section:	
customer:	
architect:	
ten plus representative:	
drawing: SUNSHADE MODEL R6-200-40	
scale:	project no.
date:	sheet no.
drawn by: TEN PLUS	TP1
checked by:	

